

Emergency escape lighting Version „KAPPA“



Emergency escape lighting Version „KAPPA“

**Surface mounted lamp
recessed
Central battery system**

**Luminous intensity distribution:
Escape route lighting**

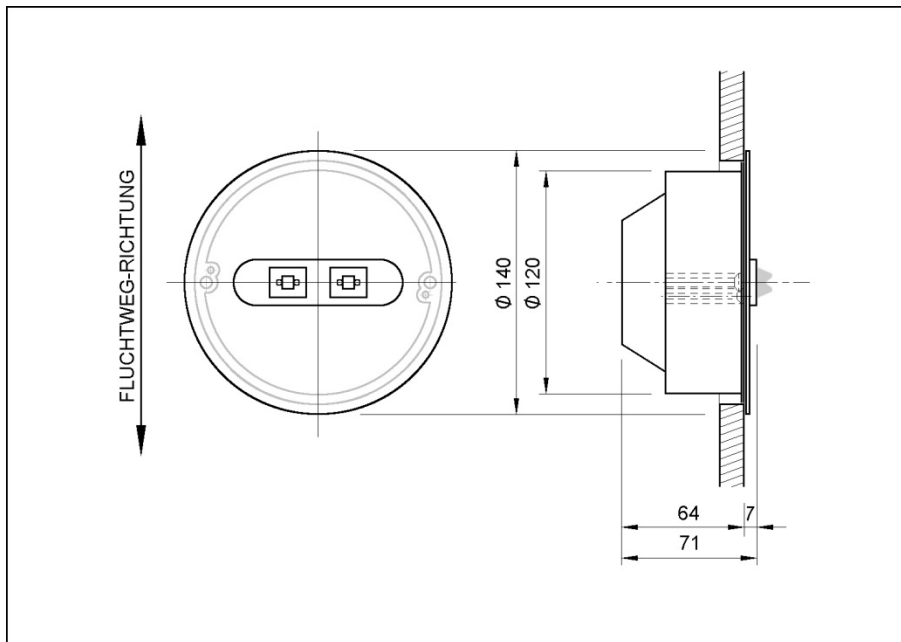
Specification

Version	KAPPA recessed lamp	
Light distribution	Asymmetric (Please ask for: Isolux diagram / EULUMDAT-data)	
Mounting	Surface mounted recessed	
Light source	2 x 3 W LED	
Power	230 V without Monitoring single lamps	7,1 VA
	230 V with Monitoring single lamps	8,0 VA
	24 V with Monitoring single lamps	6,0 W
Ambient temperature	-10 °C - +40 °C	
IP class	IP 40	
Protection class	I for 230 V III for 24 V	
Housing	Steel sheet coloured, standard colour RAL 9010 (white)	
LED-Panel	Steel sheet coloured, standard colour RAL 9005 (black)	
Weight	ca. 0,5 kg	
Dimension (∅ x depth)	∅ 130 mm x 60 mm	
Terminal	WAGO Lighting connector 2,5 mm ²	
Installation in flash-mounted box	Flash-mounted box delivery component (no. 9073-91)	

Order information

	Standard colour RAL 9010	Special colour Y = RAL colour
24 V with Monitoring single lamps	752580 – EKP/Z-24/A/Z/DE	752581 – EKP/Z-24/A/Y/DE/RAL
230 V with Monitoring single lamps	752520 – EKP/Z/A/Z/DE/08	752521 – EKP/Z/A/Y/DE/08/RAL
230 V without Monitoring single lamps	752500 – EKP/Z/A/Z/DE/N	752501 – EKP/Z/A/Y/DE/N/RAL

Dimension



Installation

See document „Installation instruction Emergency escape lighting version KAPPA surface mounted recessed“

Forchheim und Willing GmbH

Südstraße 21
09221 Neukirchen / Erzgebirge - Germany

Phone: 0049 371 27816-0
Fax: 0049 371 27816-29
E-Mail: info@forchheim-willing.de
Internet: www.forchheim-willing.de